

REDSEA Gallery

Block 9 Dempsey Road, #01-10, Dempsey Hill
Tanglin Village, Singapore 247697

Gallery Hours: Daily 11am - 8pm

Tel. +65 6732 6711

www.redseagallery.com
facebook.com/redseagallery
instagram.com/redseagallery

Customise an exceptional event experience

Unique event space to host perfectly-tailored
personal and professional events

Leaving parties,
Dinners, Receptions,
Product launches,
Cocktails, Corporate events

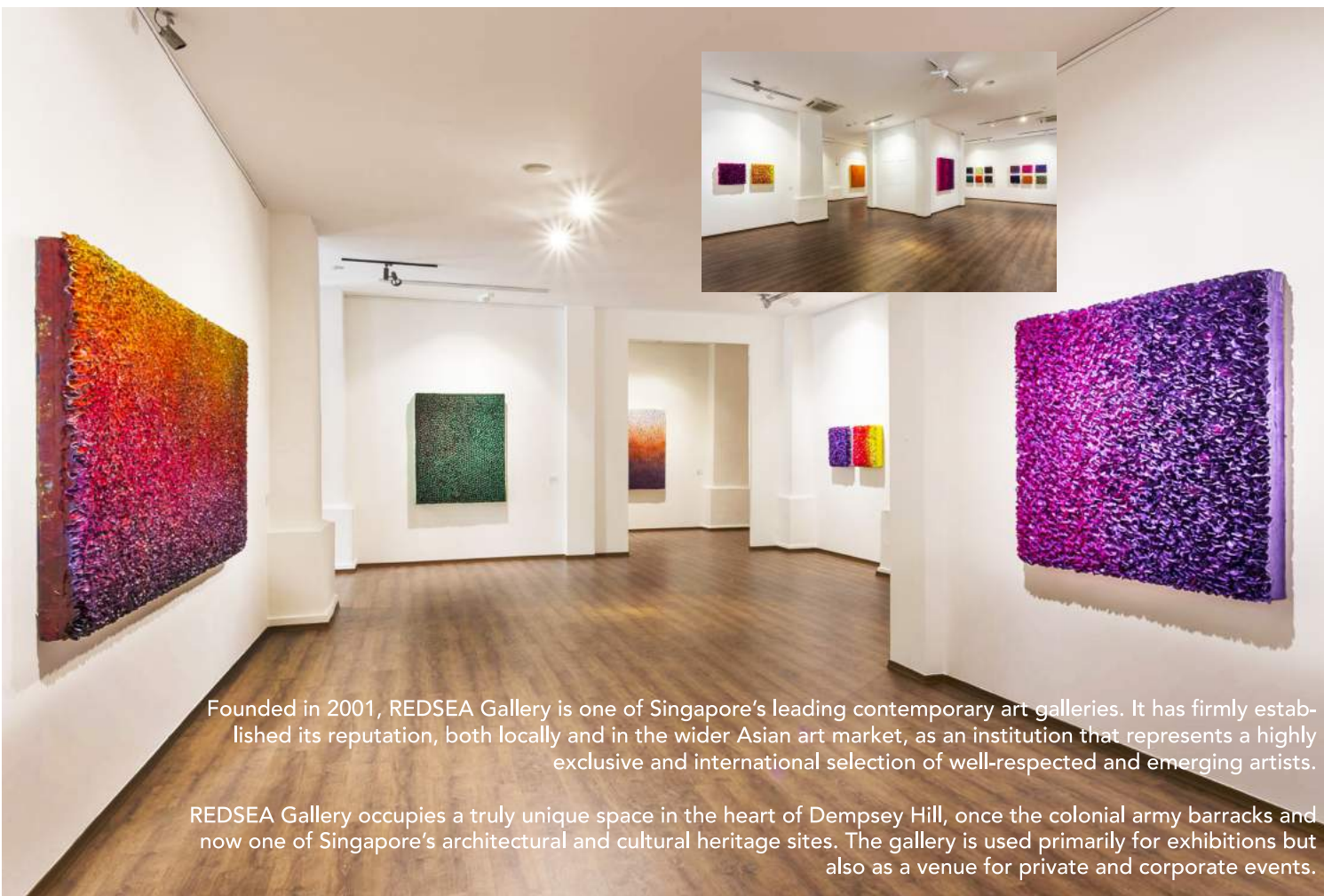
Email info@redseagallery.com for enquiries



REDSEA
GALLERY

an exceptional space for your event

9 dempsey hill



Founded in 2001, REDSEA Gallery is one of Singapore's leading contemporary art galleries. It has firmly established its reputation, both locally and in the wider Asian art market, as an institution that represents a highly exclusive and international selection of well-respected and emerging artists.

REDSEA Gallery occupies a truly unique space in the heart of Dempsey Hill, once the colonial army barracks and now one of Singapore's architectural and cultural heritage sites. The gallery is used primarily for exhibitions but also as a venue for private and corporate events.

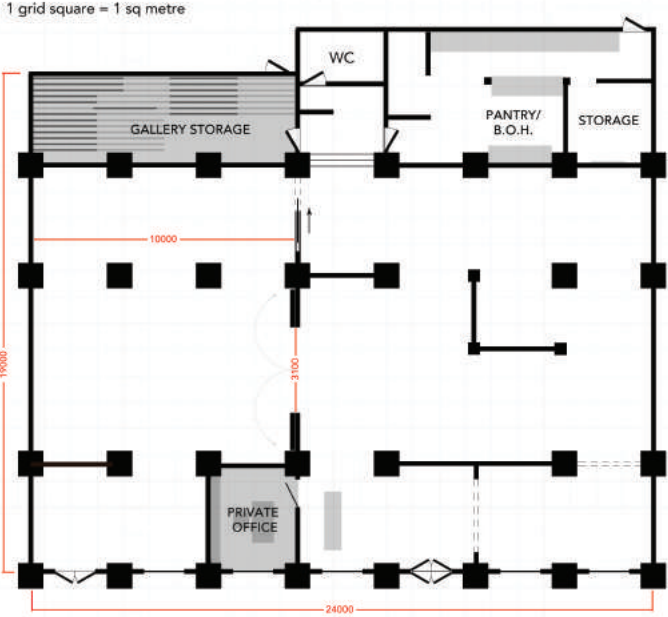
EVENT SPACE @ REDSEA GALLERY

With over 6,000 sq ft of open gallery space and stunning contemporary art on our walls, REDSEA Gallery offers a unique and exclusive venue for any occasion. From **cocktail parties, networking events** and **formal presentations** through to **seated luncheons** or **intimate, private dinners**; our elegant, versatile space and professional event management service offering allows us to **tailor-make any event** to suit your needs.

We only work with the highest quality, tried and trusted partners enabling us to offer you access to **Michelin Star level catering** or relaxed grazing tables with optional use of **full butler** and **waitering services**; use of **high-end audio visual services**; the most elegant of **event furniture** and other additional services, such as **live music or entertainment**, that you might require to make your event truly memorable.

We pride ourselves on our attention to detail and high quality service as ultimately, your events' success reflects as much on us as yourselves.

FLOORPLAN



AMENITIES

Space	Capacity
<ul style="list-style-type: none"> - Flexible configurations - Washroom - Loading/Unloading via front or back doors - Back of house for multi-purpose preparation - Office table setup available 	Private space (1500 sqft) <ul style="list-style-type: none"> - 70 standing - 24 seated Entirety (3820 sqft) <ul style="list-style-type: none"> - 170 standing - 60 seated
Technical equipment <ul style="list-style-type: none"> - WIFI - Surround sound system - Adjustable track lighting - Projector 	Food & Drink <ul style="list-style-type: none"> - In-house catering - External catering - Canape setup - Private dining - Buffet dining